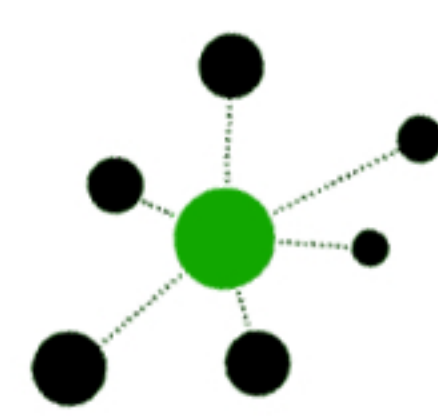


UNIPOD

TEAM SIX



The UNIPOD is designed to be the **intelligent, functioning nerve centre** of a residential building - delivering all the home's services in one compact, drop-in module.



The pod can be utilised **on its own, or with add ons** to suit the spec level of its respective development.



Not only do the pods allow for a single connection point in each unit, they can be **stacked to create vertical services risers** through a multistorey development.



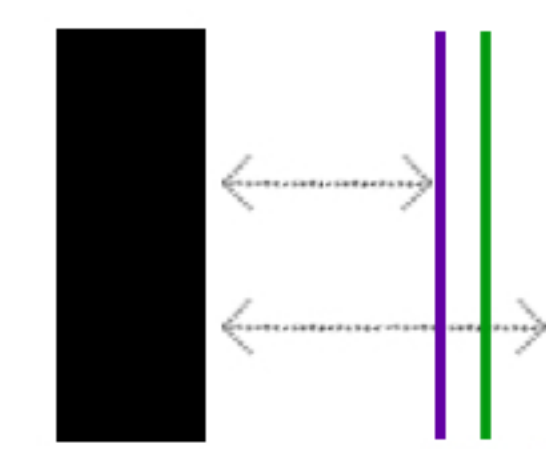
ENTRY

BED 1

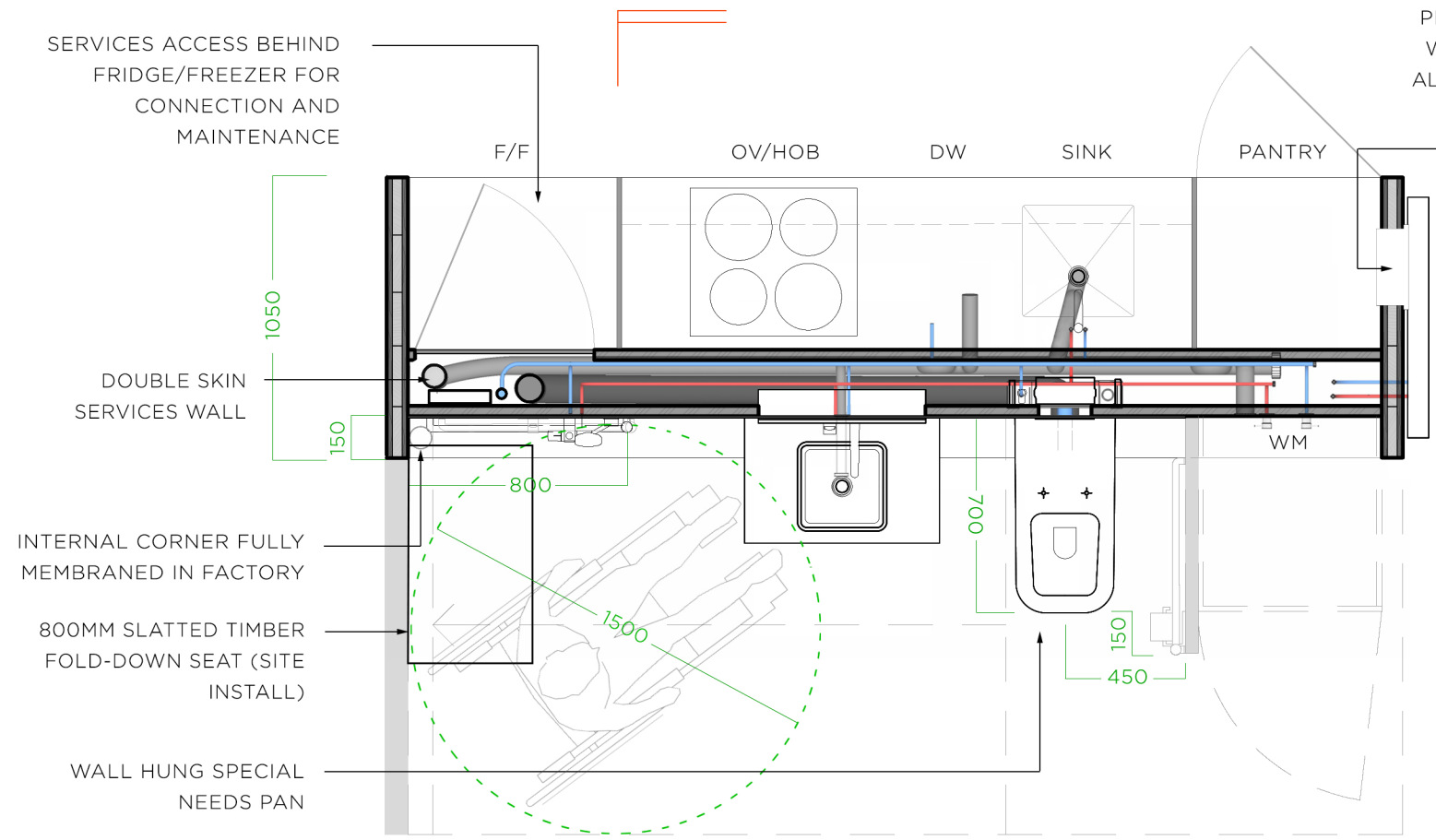


ENTRY

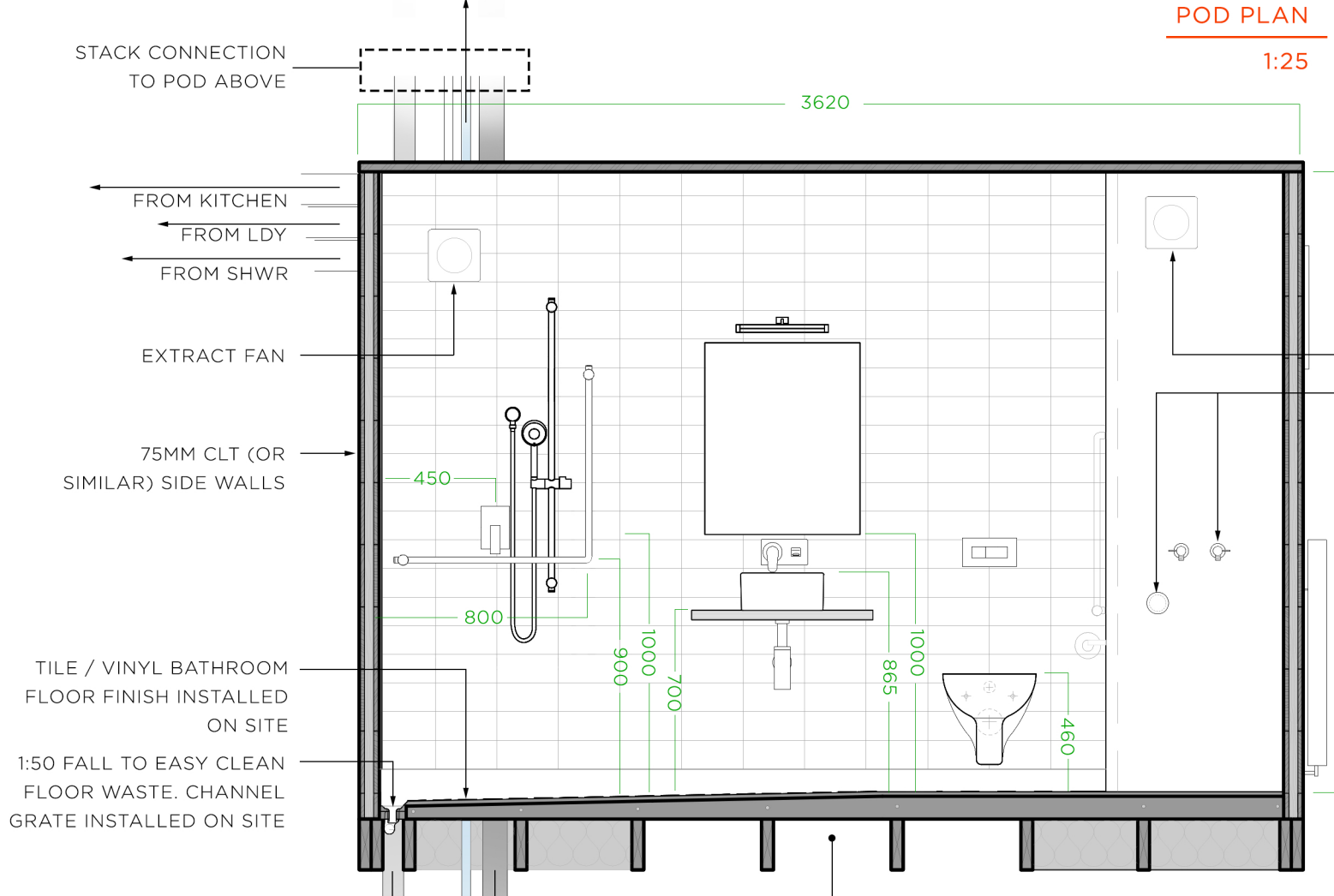
KITCHEN / DINING



Not limited by the constraints of a typical room-style prebuilt module the dense unipod contains only the essential equipment without the need to transport volumes of 'air'. This two-sided services hub does not restrict the design of a floor plan: rather, walls are built around the pod to create **a large space** or **a small space** depending on the development scope and budget.



POD PLAN
1:25



SECTION AA
BATHROOM ELEVATION
1:25

PRE-FINISHED WET AREA PANELISED WALL LINING. STANDARD H-JOINTER ALONG BASE TO RECEIVE VINYL ON SITE

- ACCESS TO SWITCHBOARD
- ACRYLIC WALL PANEL (ON-SITE INSTALL)
- SLIDE SHOWER
- WALL HUNG VANITY
- CONTINUOUS MEMBRANE TO INTERNAL CORNER + WASTE
- VINYL FLOORING INSTALLED ON SITE - PENCIL COVE TO UPSTAND



OPTION A

- METRO-STYLE WALL TILE
- CONTINUOUS MEMBRANE AROUND CORNER. WALL TILES INSTALLED ON SITE
- SELECTED SLIDE / OVERHEAD SHOWER SYSTEM
- VESSEL BASIN ON 36MM PLYWOOD BENCHTOP
- VINYL FLOORING INSTALLED ON SITE - PENCIL COVE TO UPSTAND



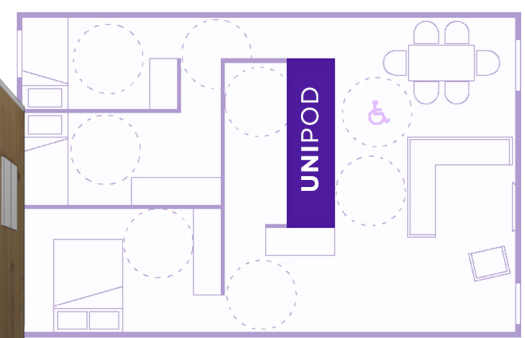
OPTION B

- DRYER EXHAUST
- WASHING MACHINE FITTINGS AND CAPPED WASTE

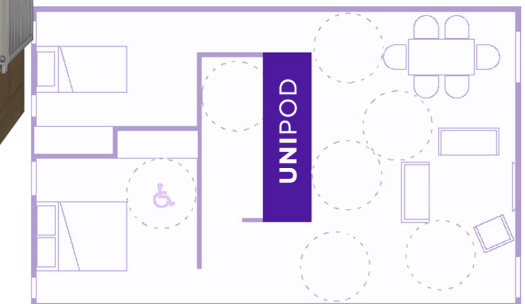
- METRO-STYLE WALL TILE
- WALL TILES INSTALLED ON SITE
- RAINSHOWER COLUMN AND SLIDE SHOWER
- ENGINEERED STONE BENCHTOP ON PLY CABINET
- MEMBRANE READY FOR TILE FLOOR FINISH TO BE INSTALLED ON SITE



OPTION C (+600mm)



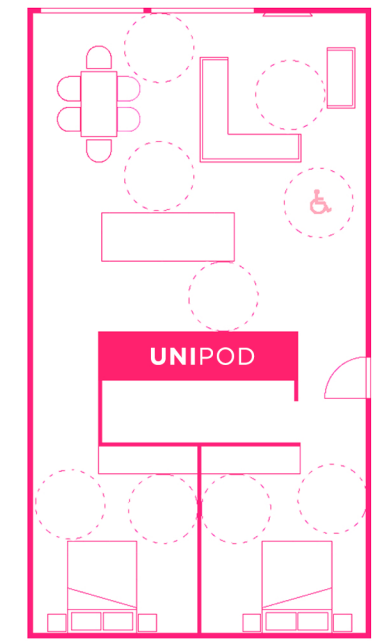
3 BED SOCIAL HOUSING UNIT
73M2



2 BED SOCIAL HOUSING UNIT
66M2



1 BED RETIREMENT UNIT
50M2



2 BED APARTMENT
97M2

* 100MM FLOOR RECESS ADJACENT TO THE UNIPOD IS REQUIRED TO ALLOW FOR A LEVEL ENTRY INTO THE BATHROOM AREA. RECESS AND TREATMENT TO SUIT BASE BUILD (PLYWOOD SUBSTRATE ON FIRRINGS; CONCRETE TROWELLED TO FALL; FIBREGLASS TRAY ETC).

SPRINKLER SYSTEM

ELECTRICAL SERVICES TO BEDROOMS

EXTRACT TO EXTERIOR:
FROM KITCHEN

FROM LDY

FROM SHWR

BATHROOM FAN UNIT

BLACK WATER DRAIN + VENT / RELIEF VENT STACK

IN-WALL CISTERN

GREY WATER DRAIN + VENT / RELIEF VENT STACK SHOWN BEHIND

TO GREY WATER TREATMENT

WATER MAINS IN

ELECTRICAL MAINS IN

TO SEWER

FALL BATHROOM FLOOR TO CHANNEL DRAIN (FLOORING SUBSTRATE TO SUIT BASE-BUILD*)

LAUNDRY / DRYER FAN UNIT

ELECTRICAL SWITCHBOARD

150L HORIZONTAL TWIN-COIL HWC

WM TAPS + DRAIN

RADIATOR FEED (CLOSED LOOP)

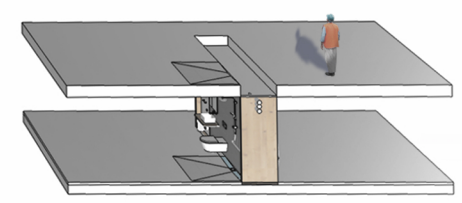
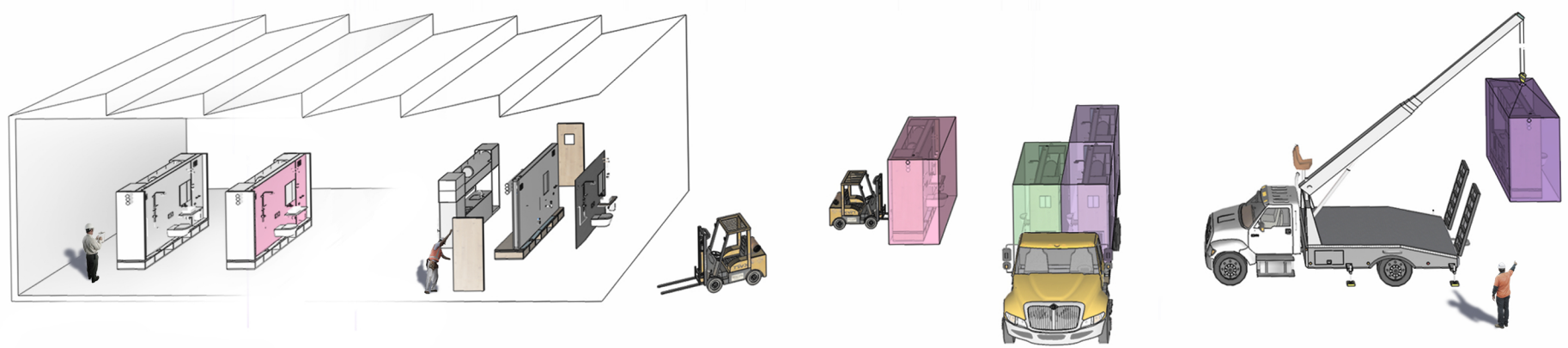
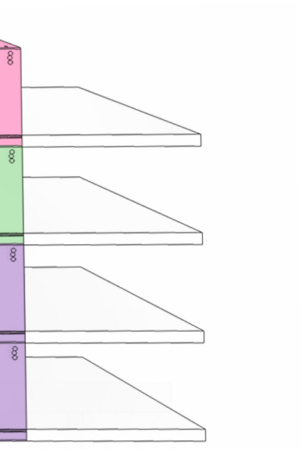
RANGE HOOD EXTRACT

100MM CLT FLOOR (OR SIMILAR) ON 190X45 H1.2 JOISTS

BASE-BUILD FLOOR CONSTRUCTION VARIES (PRECAST CONC, INSITU CONC, COMPOSITE, TIMBER FRAME ETC)

SECTION AA
1:25

UNIPOD
TEAM SIX



DOUBLE-SKINNED WALL: 2/36MM COMPRESSED WOOD FIBRE PANELS WITH 165MM CLEAR SERVICES CAVITY BETWEEN

BASE BUILD TO ALLOW 100MM DEPTH FOR BATHROOM FLOOR BUILD UP AFTER POD INSTALLATION *

36MM COMPRESSED WOOD FIBRE PANEL CEILING

BUILT IN KITCHEN CABINETRY

BATHROOM FAN UNIT

LAUNDRY / DRYER FAN UNIT

150L HORIZONTAL TWIN-COIL HWC

ELECTRICAL SWITCHBOARD

WM TAPS + DRAIN

RADIATOR FEED (CLOSED LOOP)

IN-WALL CISTERN

BLACK WATER DRAIN + VENT / RELIEF VENT STACK

GREY WATER DRAIN + VENT / RELIEF VENT STACK SHOWN BEHIND