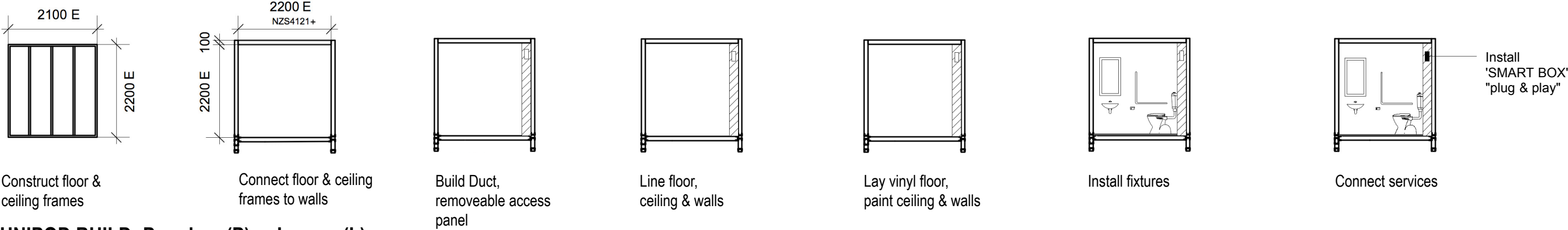
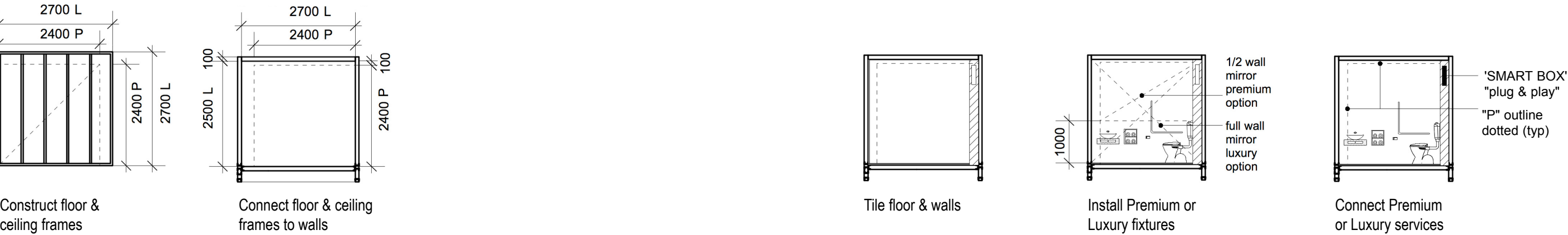


OFF SITE

UNIPOD BUILD: Economy (E)



UNIPOD BUILD: Premium (P) or Luxury (L)



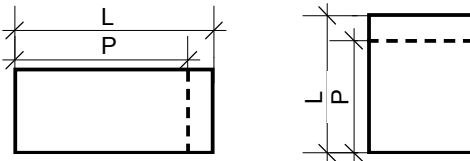
OFF SITE

SMART BOX FABRICATE

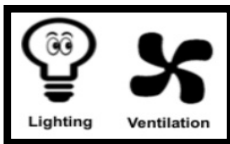
Fabricate box: Economy (E)



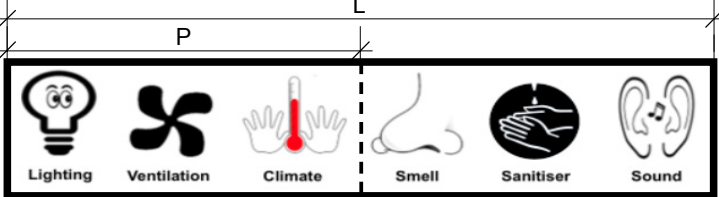
Fabricate box: Premium (P) or Luxury (L)



Insert Economy (E) Technologies



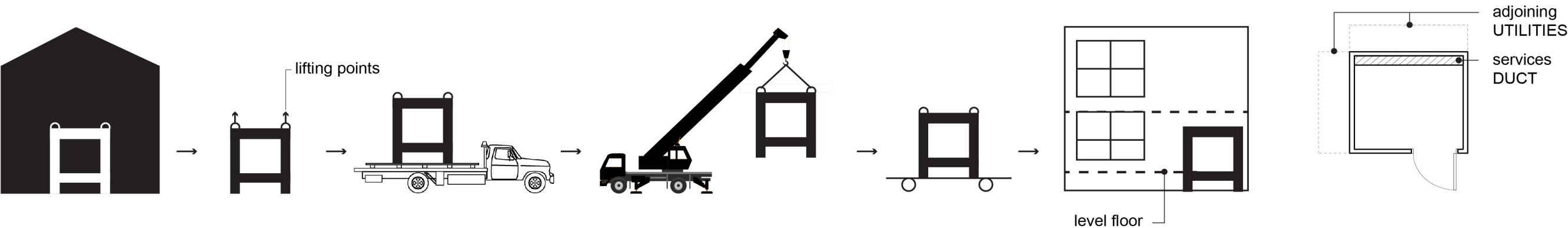
Insert Premium (P) or Luxury (L) Technologies

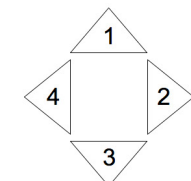
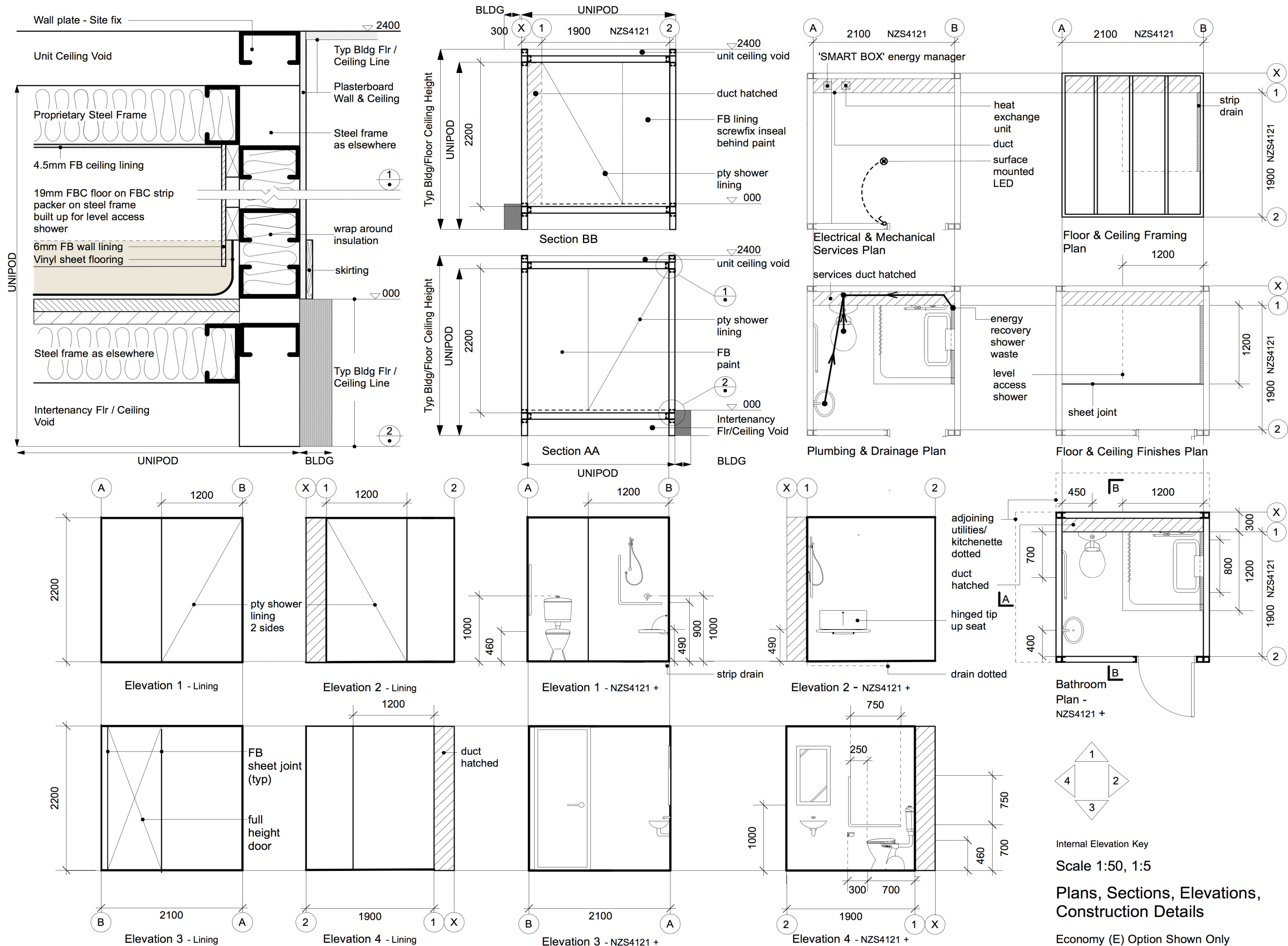


UNIPOD CONCEPT

- **Aim** COMPLY with Competition brief + Innovation. Main features below.
- **Standards** CONFORM to NZS4121 Accessible Toilets and Bathrooms + Lifemark Universal design Guidelines
- **Services** PROVIDE duct for Unipod docking services/storage cabinet + adjoining kitchenette services
- **Costs** CONTROL via size + USE proprietary linings + finishes + fixtures - QS verified 'E' option \$2150/m2 + 'SMART BOX'
- **Construction** USE available partner modular steel framing building systems
- **Interface** CRANE onto building site and ROLL into position
- **Innovation** INSTALL a "plug and play" 'SMART BOX' (Docking Services Unit in Duct) + Command Fusion Control
- **ECO** APPLY for Homestar 6 rating minimum
- **Options** Economy, Premium, Luxury
- **Core Team** ARCHITECT, BUILDER, MATERIALS SUPPLIER
- **Support Team** STRUCTURAL + others TBC including framing suppliers, "smart intelligence" designers & energy efficient input
- **Team 13 Resources** BUILD & DELIVER capability for a prototype if successful

ON SITE





Internal Elevation Key
Scale 1:50, 1:5

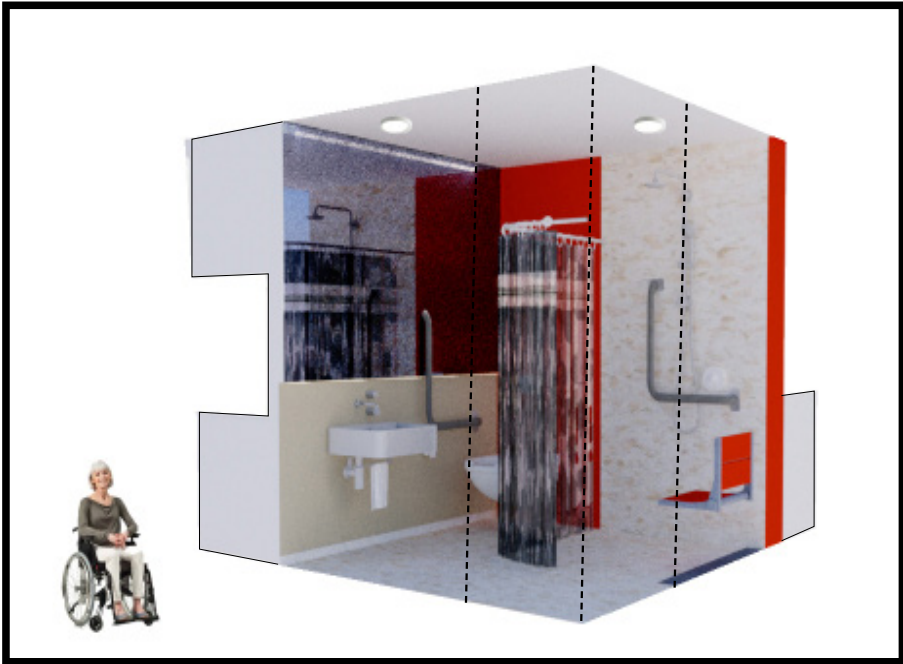
Plans, Sections, Elevations,
Construction Details

Economy (E) Option Shown Only

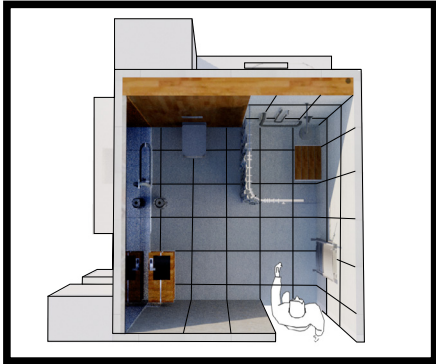
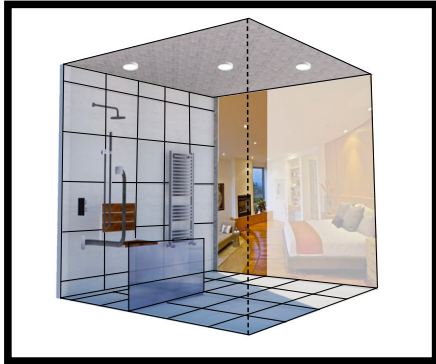
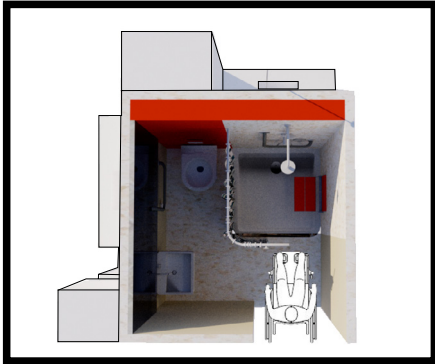
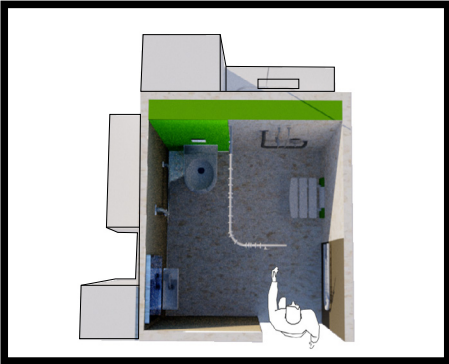
ECONOMY



PREMIUM



LUXURY



STARTER OPTIONS	Size	Floors	Walls	Ceilings	Shower Floor Level Access	Shower Walls	Shower Screen	Whiteware	Tapware	Mirror	Hardware	Electrical	Mechanical	Notes
														Can pick & mix across 3 nos. Starter options E, P, L
Economy (E)	2100x2200x2200H													Size to sheet sizes where possible
Structure		Steel	Steel	Steel	-	-	-	-	-	-	-	-	-	Steel proprietary sizes
Lining		FBC	FB	FB	Pty Universal Tray	Pty Panels x2	Curtain E	E	E	NZS Size	-	-	-	Floors: FBC (compressed fibre cement sheet)
Finishes		Sheet Vinyl E	Paint	Paint	-	-	Fabric	E	E	Pol Plate	SS	Std	Std	Walls / Ceilings: FB (Fibre Cement) lining screw fixed with inseal tape behind joint
Premium (P)	2400x2400x2400H													
Structure		Steel	Steel	Steel	-	-	-	-	-	-	-	-	-	E selections for fittings & fixtures (energy saving) for all options
Lining		FBC	FB Prefinish	FB Prefinish	Pty Universal Tray	FB Prefinish	Curtain P	P	P	P Size	-	-	-	FB panels with accessories
Finishes		Sheet Vinyl P	-	-	-	-	Fabric	P	P	Pol Plate	SS P	P	P	Larger mirror + P Selections
Luxury (L)	2700X2700X2700H													
Structure		Steel	Steel	Steel	-	-	-	-	-	-	-	-	-	
Lining		FBC	FB	FB	Pty Universal Tray	FB	Slider + Curtain	L	L	L Size	-	-	-	FB Sheet
Finishes		Tile	Tile	Paint	Tile	Tile	Glass + Fabric	L	L	Pol Plate	SS L	L	L	Tile on waterproofing on FB or FBC sheets

UNIPOD OPTIONS & EXTRAS

• **STRATEGY** : 3 starter E, P, L Options can OFFER “Pick & Mix” Flexibility.

• **INTERFACE 1** : Built-in services duct CONNECTS adjoining utility areas eg Kitchenette. Access panel for easy servicing, upgrading and replacement.

• **INTERFACE 2** : ‘SMART BOX’ OFFER “Plug & Play” options utilising available technology for Economy, Premium, Luxury options. Energy management.

• **ADAPTABILITY** : Screw-on panel linings for walls and ceilings ALLOW cheap and cheerful personalisation by new occupants.

• **SUSTAINABILITY** : Options INCLUDE commonly available product. Low flow water-saving plumbing fixtures, Heat exchange fresh air vent & auto humidistat, energy recovery shower wastes, power management unit + LED lighting, acoustically aware design with wrap around insulation. All paints & sealants low VOC (volatile organic compound)

• **VALUE** - UNIPOD as an intelligent “super bathroom” INCORPORATES: Small ecological footprint, enhanced functionality & safety, cost effective design to key dimensions & features to LIFEMARK standards