

# Whitebaiter Crib



## Easy living design:

Exterior dimensions 7.2m x 6.2m

Height meets transportable building requirements @ 4.25m

Building footprint 45m<sup>2</sup>

Treated floor area 35m<sup>2</sup>

## Building layout:

Entrance mudroom with coat and shoe storage. Mechanical cupboard housing hot-water and MVHR

Full size kitchen with additional storage above bulkhead

Living space with optional wood burner for cooler sites.

Reading nook or storage area accessible from living space

Attic storage area or day bed.

Bedroom with under bed and wardrobe storage

Bathroom with easy access shower and integrated laundry





Mudroom / Entrance



Kitchen



Kitchen Island



Living



Bedroom



Bedroom Storage



Bathroom

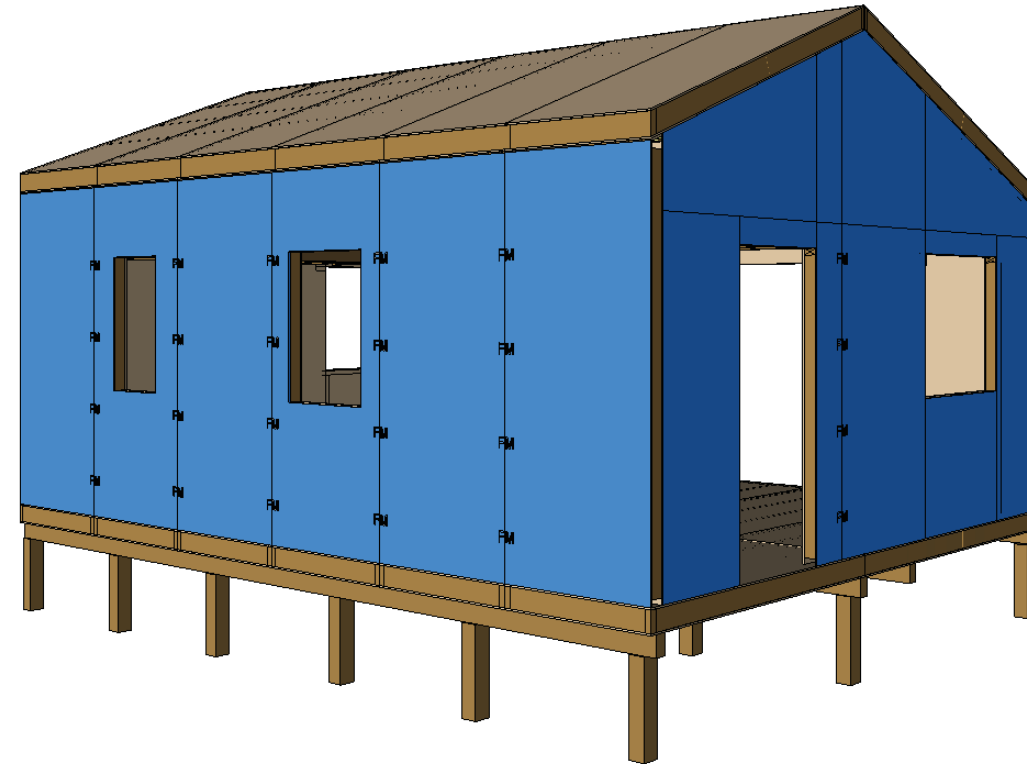
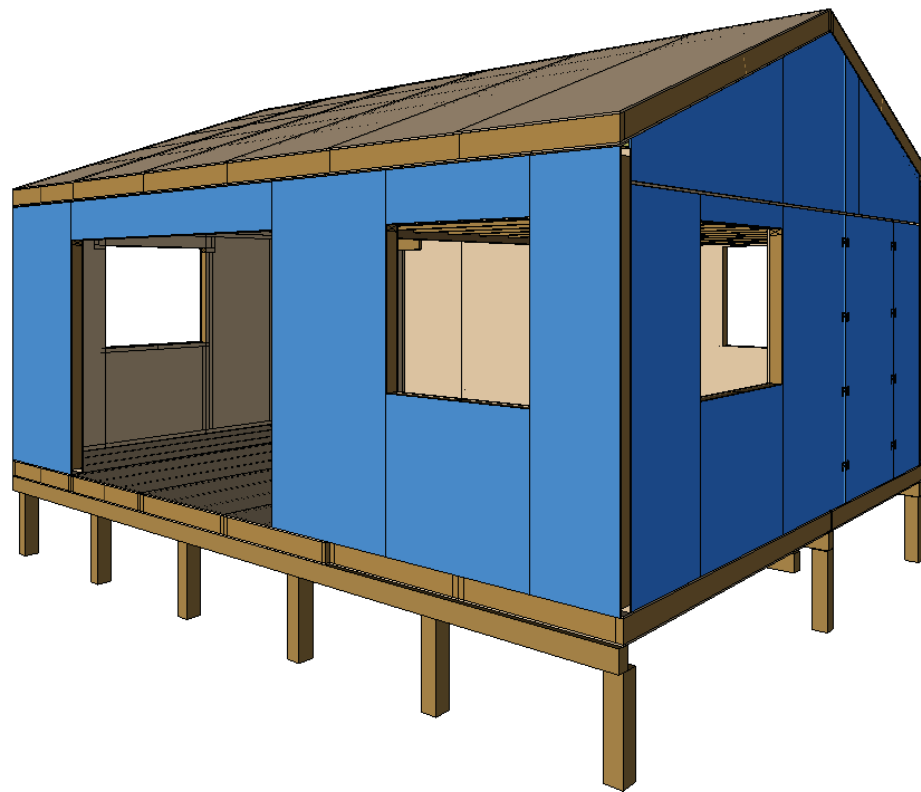


Laundry



Reading Nook

# Whitebaiter Crib



## Prefabricated Build:

Wood or Sure-foot Piles

165mm PUR SIP Floor

115mm PUR SIP Wall

Integrated wiring - use internal face of SIP as wall finish

165mm PUR SIP Roof - use internal face of SIP as ceiling finish

Cassette internal painted walls and loft panels.

Thermally broken ALU or UP-VC/ALU Joinery

Wood or Iron Cladding

Wood or Iron Roofing

Engineered for high wind, snow load and full build transport.

Building can be delivered as a kit-set flat pack to local builder or factory build and transported to site

Meets Passive House low energy certification in the North of New Zealand

Minimal heating or cooling load requirements-low cost of living

Grid Platform allows for use of details from one to four bedroom prefab / transportable designs

